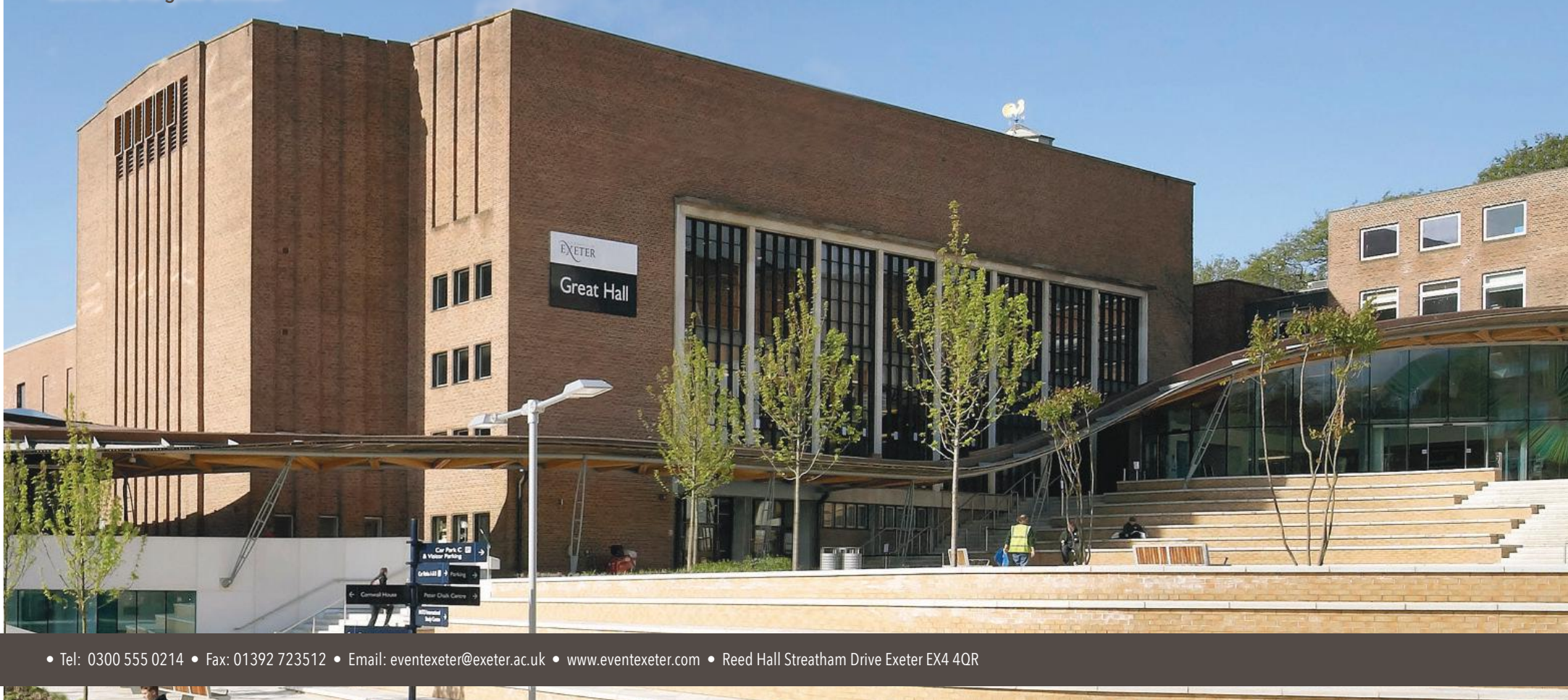


# THE GREAT HALL AND DEVONSHIRE HOUSE

The Great Hall, within Devonshire House, is the largest of the University's facilities. Containing movable seating within the auditorium, this large space can be adapted for many different uses, from formal theatre style events, through to exhibitions, concerts and gala dinners.

## VENUES

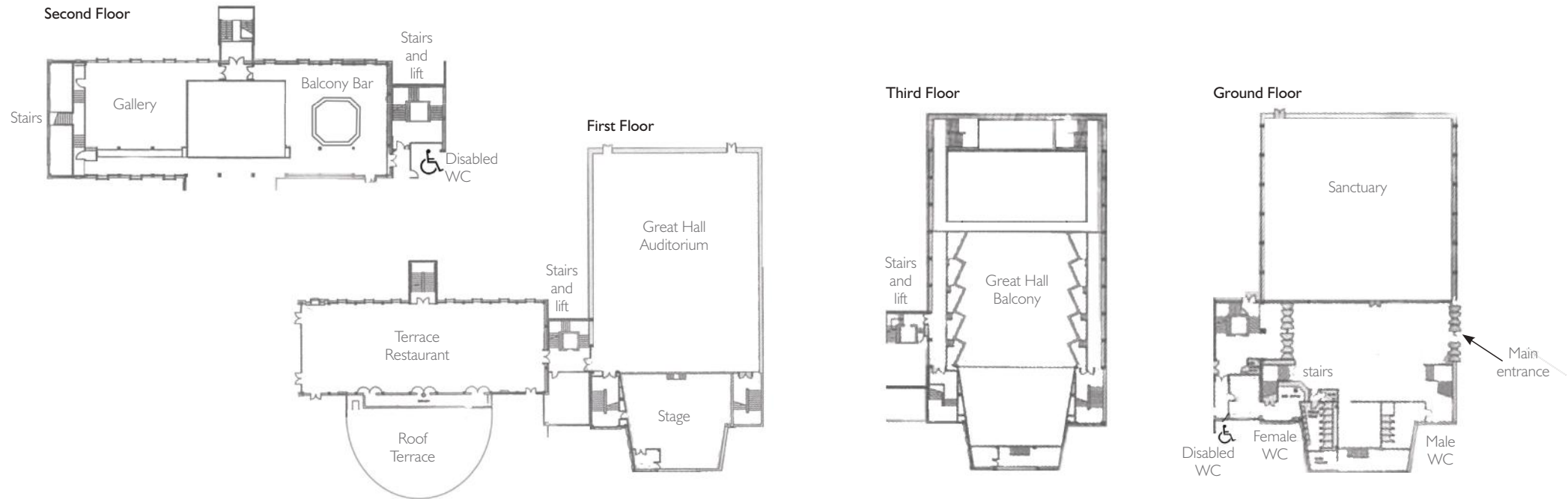
with  
event exeter



# THE GREAT HALL AND DEVONSHIRE HOUSE

## FACILITIES

**VENUES**  
with event exeter



FACILITIES AT A GLANCE											
	Theatre Style Max No.s	First Floor Auditorium Movable Seating	Third Floor Gallery Boxes	Third Floor Gallery Fixed Tiered Seating	Board Room	Exam Style	Seminar Room	Exhibition	Reception	Formal Dining	Finger Buffets
<b>The Great Hall</b>	1435	978	10 Boxes (8 seats per box)	377	-	252	-	46 stands 3m x 2m	1800	500	700
<b>The Great Hall Stage</b>	-	-	-	-	-	54	-	-	-	-	-
<b>Terrace Restuarant</b>	200	-	-	-	-	-	-	27 stands 3m x 2m	500	300	350
<b>The Balcony Bar</b>	-	-	-	-	-	-	-	-	100	-	-
<b>Sanctuary</b>	300	-	-	-	-	174	-	33 stands 3m x 2m	400	200	200

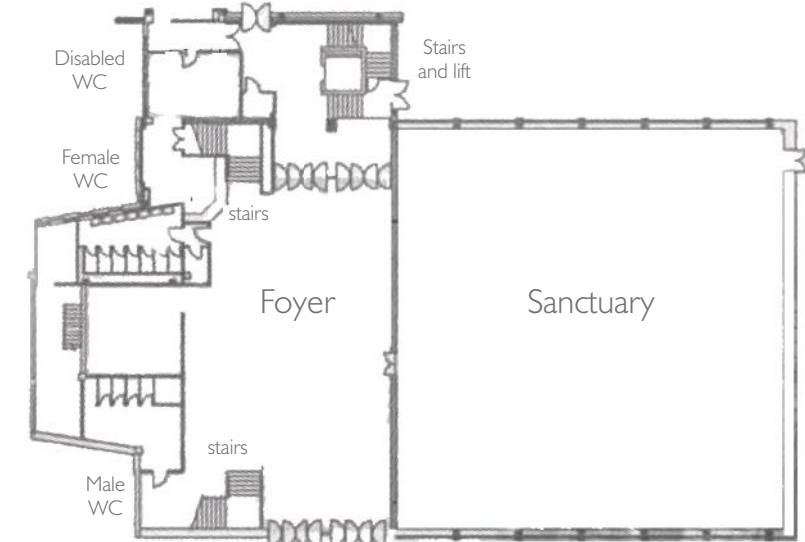
# THE GREAT HALL FOYER AND SANCTUARY

## GROUND FLOOR

**VENUES**  
with event exeter

THE GREAT HALL FACILITIES	
Usable floor space	112 sq m – tiled
Length	17.8 m
Width (from reception to Lower Exhibition Hall)	6.3 m
Height of floor to ceiling	3.2 m
Access Doors	<ul style="list-style-type: none"> <li>• 2 sets of double doors 1.4 m wide x 1.9 m high</li> <li>• 4 single doors 0.67 m wide x 1.89 m high</li> </ul>
Fire Exits	Through main access doors
Heating	Wall vents
Lighting	Natural light from entrance doors. Suspended ceiling lights
Built in equipment	Reception 6.2 m wide and 3.64 m deep with cloakroom. Wi-Fi enabled
Telephone points	VOIP telephone and Data points
Power supplies	4
Parking	Car park C is available on Stocker Road with 10 accessible parking bays
Access	Via lift or stairs from the ground floor

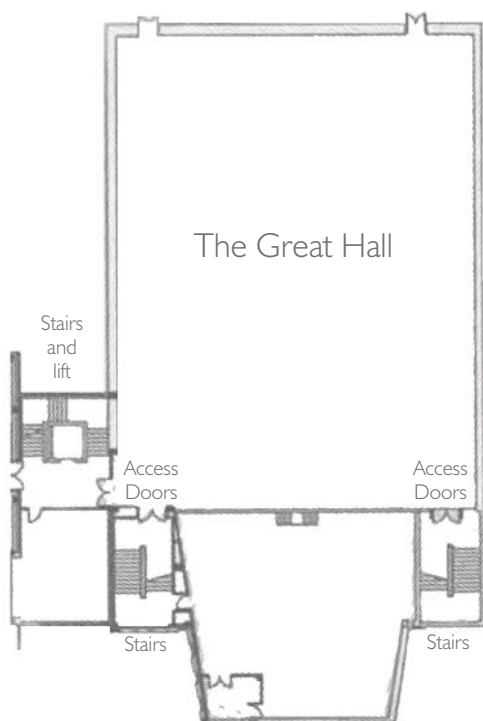
SANCTUARY	
Height:	
Floor to ceiling	3.200 m
Floor to lights	3.048 m
Floor to ceiling between pillars	3.048 m
Floor to ceiling along both sides in front of windows	2.745 m
Length	21.184 m
Width	3.393 m
Access Doors	<ul style="list-style-type: none"> <li>• Entrance from Foyer 1.450 m wide x 2 m high</li> <li>• Emergency door to car park 1.600 m wide x 2.180 m high</li> </ul>
Usable floor area	500 sq m
Access route	Main entrance from foyer, side door access
Pillars	5 pillars in the centre of the room
Fire Exits	Side wall out to Inner Quad Back wall to rear of building
Heating	Radiators
Lighting	Natural light Fluorescent lights above Slatted blinds at windows
Number of power points	4 x double 13amp – 2 on front wall / 2 on back wall 10 x single 13amp – 2 on each side of pillar



# THE GREAT HALL

## FIRST FLOOR

Access to the Great Hall is by lift or stairs to the first floor. The entrance is through double doors either side of the stage at the front of the hall or through doors at the rear of the auditorium, which link through to the Visitor Reception area.



MEETING ROOM CAPACITIES				
	Auditorium	Gallery	Boxes	Maximum
<b>Theatre Style</b>	978	377	80	1435
<b>Classroom</b>	252	–	–	–
<b>Exhibition</b>	46 stands	–	–	–

DINING CAPACITIES	
Cabaret Style (6ft round tables seating 10)	Maximum
Without Bar or Dance Floor	500
With Bar	420
With Dance Floor	400
With Bar and Dance Floor	360
Banquet Style (Top table with sprigs)	
Without Bar or Dance Floor	570
With Bar	500
With Dance Floor	470
With Bar and Dance Floor	450
Herringbone and Sprigs mix	
Without Bar or Dance Floor	600
With Bar	530
With Dance Floor	540
With Bar and Dance Floor	490

**VENUES**  
with event exeter



# THE GREAT HALL

## FIRST FLOOR

**VENUES**  
with event exeter

MEETING ROOM CAPACITIES	
<b>Main Floor</b>	
Wooden floor – usable floor space	500 sq m
Length	28.31 m
Width	23.48 m
Distance between pillars at rear of auditorium	18.40 m
Distance from curtains to the stage	19.10 m
Height of floor to ceiling	12.65 m
Height of floor to front of Balcony Boxes	4.5 m
Height of floor to rear of Balcony Boxes	3.2 m
With Bar and Dance Floor	450
Fire Exits – 1 either side of stage 3 to the rear of the hall	Dimensions below
<b>Access area and emergency doors</b>	
A service lift is available to the stage	
Width of link at rear of the hall	1050 m
Depth of link at rear of the hall	3.15 m
Width of emergency doors in link	1.63 m
Height of emergency doors in link	2.04 m
Width of emergency door to the rear of hall	1.67 m
Height of emergency door to the rear of hall	2.01 m
Width of emergency door to the front of hall	
Height of emergency door to the front of hall	

MEETING ROOM CAPACITIES	
<b>Balcony Level</b>	
Height of the front of Balcony floor to ceiling	7.62 m
Height of the rear of Balcony floor to ceiling	2.75 m
<b>Stage</b>	
Height from main floor to stage floor	1.52 m
Width of stage for 1st level	15.1 m
Height to ceiling from 1st level	6.4 m
Depth of stage from 1st level to 2nd level	5 m
Height up to 2nd level	0.35 m
Width of stage for 2nd level	13.42 m
Height to ceiling from 2nd level	6.04 m
Depth of stage from 2nd level to 3rd level	2.1 m
Height up to 3rd level	0.38 m
Width of stage for 3rd level	8.76 m
Height to ceiling from 3rd level	6.36 m
Depth of stage from 3rd level to rear of stage (3rd level of stage can be removed if required)	3.4 m
Piano lift on 1st level	3.35m x 2 m
Distance between steps at either side of stage	9.25 m
Distance of steps from floor to stage	2.92 m



# THE GREAT HALL

## FIRST FLOOR

**VENUES**  
with event exeter

FACILITIES	
Heating	Floor heating / cooling system with ceiling air extraction above
Technical capabilities	<ul style="list-style-type: none"> <li>• Nexo sound rig featuring PS15's, PS10's and LS1200 bass</li> <li>• 24 channel sound desk</li> <li>• 4 x Robe Colour Spot 575 moving head wash lights</li> <li>• 2 x Robe Colour Spot 250 moving head spot lights</li> <li>• 2 x 4500 lumen projectors</li> <li>• A selection of profile and Par 64 lanterns</li> <li>• Avolites lighting desk</li> </ul> <p>A large selection of further equipment including radio mics, instrument mics, LED lights, mirror balls and pyrotechnics are also available. Please ask for further details</p>
Telephone points	None in this area
ISDN lines	None in this area
Power supplies	<ul style="list-style-type: none"> <li>• 200 amp 3 Ph N &amp; E Camlocks</li> <li>• 125 amp 3 Ph N &amp; E "C" Form Socket</li> <li>• 125 amp 3 Ph N &amp; E "C" Form Socket (sound only)</li> <li>• 63 amp 3 Ph N &amp; E "C" Form Socket</li> <li>• 32 amp 3 Ph N &amp; E "C" Form Socket</li> </ul> <p>For health and safety reasons, an electrician will always be in attendance when any of the above are used.</p> <ul style="list-style-type: none"> <li>• 13 amp Ring mains on Stage</li> <li>• 13 amp Ring mains in Hall</li> <li>• 13 amp Ring mains on Balcony</li> </ul>
Parking	Car park C is available on Stocker Road with 10 accessible parking bays
Access	Lift and stairs access to all levels. Accessible toilet on 2nd floor



# TERRACE RESTAURANT

## FIRST FLOOR

**VENUES**  
with event exeter

FACILITIES	
Wooden floor – usable floor space	305 sq m
Length	32.8 m
Width	9.3 m
Height of floor to ceiling	Highest point 6.2 m Lowest point 2.3 m
Access Doors	From the Great Hall 1.9 m high x 1.5 m wide From the stairwell 1.9 m high (2 sets of doors) 0.4 m wide
Fire Exits	Via access doors as above and also on the outer wall 2.0 m high x 1.5 m wide
Heating	Covered radiators
Lighting	Ceiling spot lights Pendula ceiling lights Wall lights
Built in equipment	–
Telephone points	–
Power supplies	19
Parking	Car park C is available on Stocker Road with 10 accessible parking bays
Access	Via lift or stairs from the ground floor

DINING CAPACITIES	
<b>Banquet Style (Top table with sprigs)</b>	
Without Bar or Dance Floor	300
With Bar	200
With Dance Floor	200
With Bar and Dance Floor	150
<b>Herringbone and Sprigs mix</b>	
Without Bar or Dance Floor	250
With Bar	150
With Dance Floor	150
With Bar and Dance Floor	100
<b>Cabaret Style (6ft round tables seating 10)</b>	
Without Bar or Dance Floor	200
With Bar	150
With Dance Floor	150
With Bar and Dance Floor	100
<b>Informal Set out café style with a mix of round/square/rectangular tables</b>	216
<b>Finger buffet</b>	350

