

QUEEN'S BUILDING

The Queen's Building is built around an attractive lawned garden and can be accessed from three sides, with the main entrance located on The Queen's Drive.

VENUES

with
event exeter

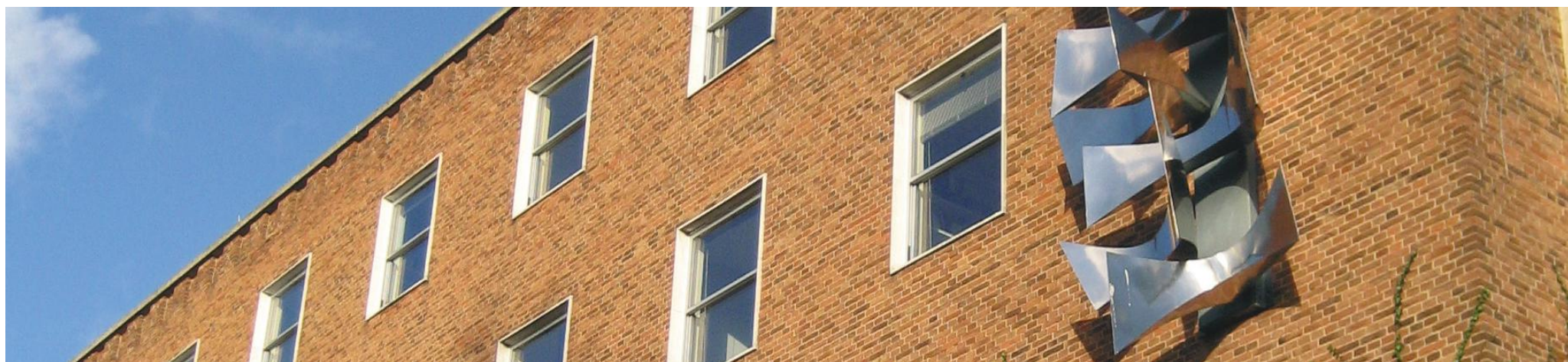
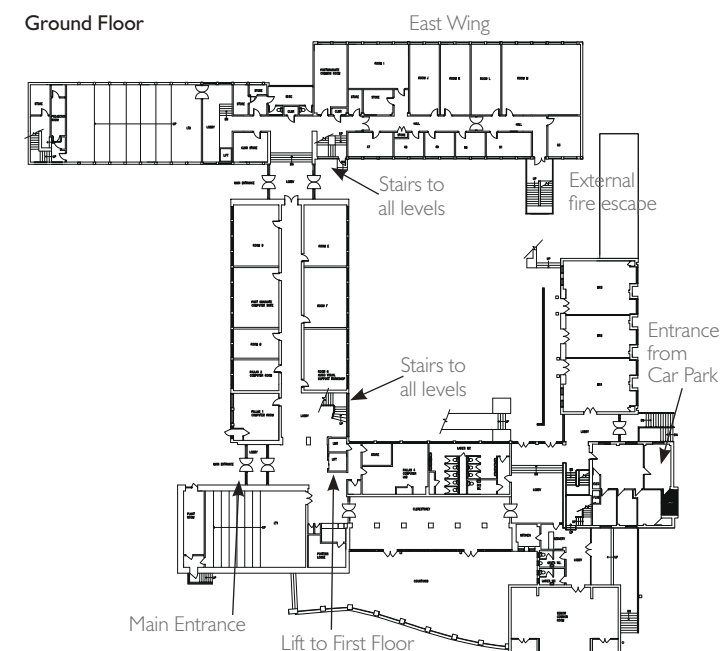


QUEEN'S BUILDING GROUND FLOOR

CAPABILITIES OF FACILITIES OF LECTURE THEATRES

VENUES
with event exeter

FACILITIES AT A GLANCE					
	Theatre	Boardroom	Classroom	Cabaret	Horseshoe of chairs
Lecture Theatre 1 (Fixed tiered)	120	–	–	–	–
Lecture Theatre 2 (Fixed tiered)	152	–	–	–	–
Margaret Rooms 1	30	20	N/A	N/A	32
Margaret Rooms 2	24	12	N/A	N/A	12
Margaret Rooms 3	30	20	N/A	N/A	32
Margaret Rooms 1 & 2 combined	54	32	N/A	N/A	32
Margaret Rooms 2 & 3 combined	54	32	N/A	N/A	32
Margaret Rooms 1 & 2 & 3 combined	86	N/A	N/A	N/A	N/A
Seminar Room D	50	24	32	N/A	40
Seminar Room E	50	24	32	N/A	40
Seminar Room F	50	24	32	N/A	40



QUEEN'S BUILDING GROUND FLOOR

CAPABILITIES OF FACILITIES OF LECTURE THEATRES

VENUES
with event exeter

MARGARET ROOMS FACILITIES	
Flat floored seminar room with moveable walls to convert into 3 separate areas	86 Maximum number combined Margaret Rooms 1 6.3m x 7.7m 48.5sqm Margaret Rooms 2 5.0m x 7.7m 38.5sqm Margaret Rooms 3 6.3m x 7.7m 48.5sqm
Heating	Underfloor heating
Lighting	Ceiling lights and natural light with blackouts
Ventilation	Windows open if required
Flooring	Carpet
Fire Exits	Via side doors of meeting rooms
Built in equipment	<ul style="list-style-type: none"> • Data projector • OHP • DVD player • Hearing loop • Computer • Projector screen • Network points
Accessibility	All chairs are movable due to the flat floor in this area. Wheelchair seating can therefore be arranged in line with the organiser's requirements

Seminar Rooms D, E and F Facilities	
Flat floored seminar rooms	50 Maximum number rooms
Heating	Underfloor heating
Lighting	Ceiling lights and natural light with blackouts
Ventilation	Windows open if required
Flooring	Carpet
Fire Exits	Either end of the corridor via lobby or main entrance
Built in equipment	<ul style="list-style-type: none"> • Data projector • White board • Projector screen • Video tape player • Hearing loop • Computer • OHP • DVD player • Network points
Accessibility	All chairs are movable due to the flat floor in this area. Wheelchair seating can therefore be arranged in line with the organiser's requirements

LECTURE THEATRE 1 FACILITIES	
Fixed tiered lecture theatre	120 Maximum number
Heating	Underfloor heating
Lighting	Ceiling lights and natural light with blackouts
Ventilation	Air conditioning
Flooring	Carpet
Fire Exits	Via main entrance doors
Built in equipment	<ul style="list-style-type: none"> • Data projector • Video tape player • Computer • Lectern microphone • OHP • Projector screen • Network points • DVD player • Hearing loop
Accessibility	Wheelchair access but not defined seating



QUEEN'S BUILDING GROUND FLOOR

CAPABILITIES OF FACILITIES OF LECTURE THEATRES

VENUES
with event exeter

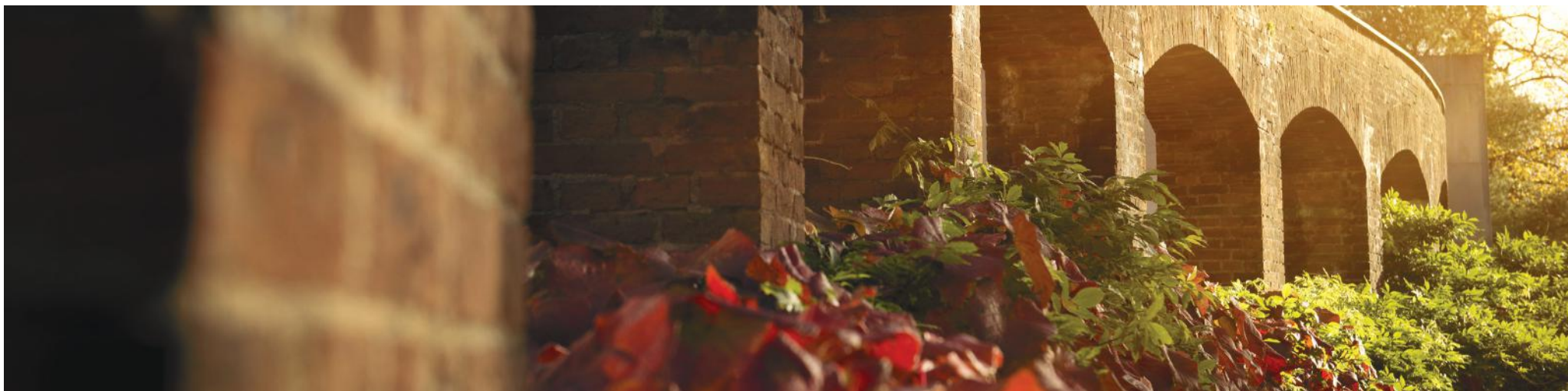
LECTURE THEATRE 2 FACILITIES				
Fixed tiered lecture theatre	152 Maximum number			
Heating	Underfloor heating			
Lighting	Ceiling lights and natural light with blackouts			
Ventilation	Air conditioning			
Flooring	Carpet			
Fire Exits	Via lobby doors off east wing			
Built in equipment	<ul style="list-style-type: none"> • Data projector • DVD player • Network points 	<ul style="list-style-type: none"> • Computer • Video tape player • Hearing loop 	<ul style="list-style-type: none"> • White board • Lectern microphone • Document camera 	<ul style="list-style-type: none"> • OHP • Projector screen
Accessibility	Wheelchair access but not defined seating			



QUEEN'S BUILDING FIRST FLOOR

CAPABILITIES OF FACILITIES OF LECTURE THEATRES

VENUES
with event exeter

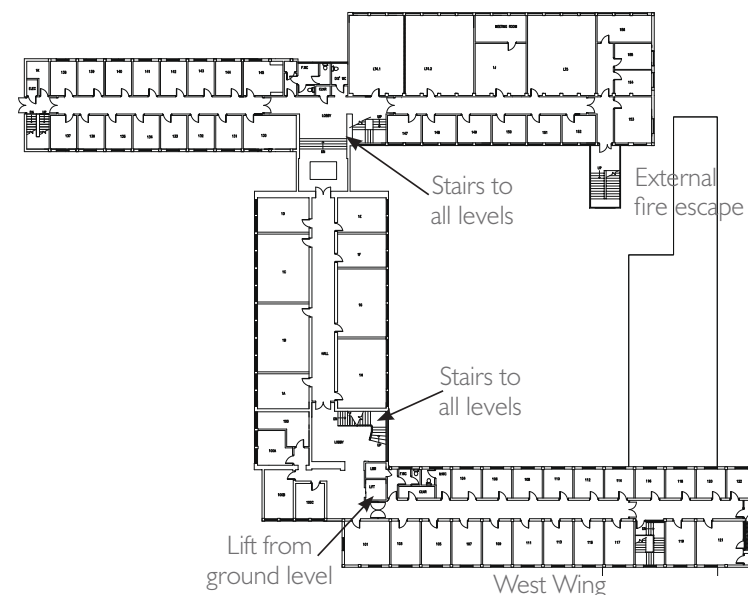


Facilities at a glance

	Theatre	Boardroom	Classroom	Cabaret	Horseshoe of chairs
Lecture Theatre 4 (Flat floored with dividing wall)	100	–	70	60	80
Lecture Theatre 4 divided – LT 4.1	40	28	30	24	30
Lecture Theatre 4 divided – LT 4.2	60	30	40	36	50
Seminar Room 1A	20	16	12	–	12
Seminar Room 1B	50	24	32	–	40
Seminar Room 1C	50	24	32	–	40
Seminar Room 1D	20	16	12	–	12
Seminar Room 1E	20	16	12	–	12
Seminar Room 1F	20	16	12	–	12
Seminar Room 1G	50	24	32	–	40
Seminar Room 1H	50	24	32	–	40

First Floor

East Wing



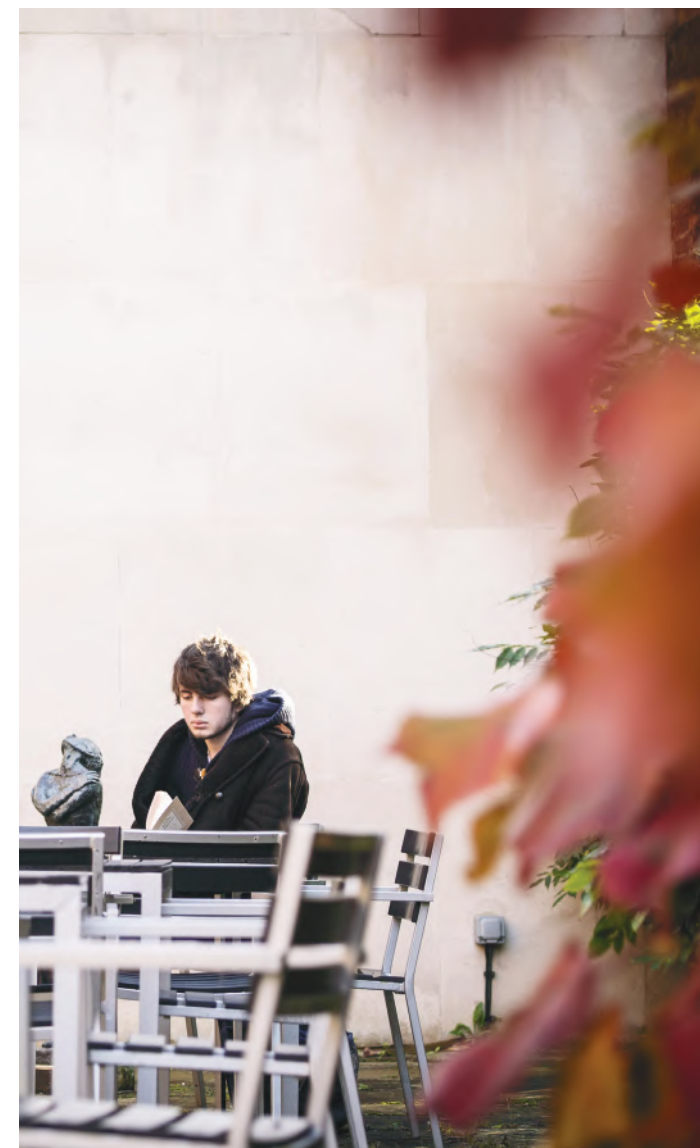
QUEEN'S BUILDING FIRST FLOOR

CAPABILITIES OF FACILITIES OF LECTURE THEATRES

VENUES
with event exeter

Lecture Theatre 4 Facilities	
Flat floored lecture theatre with movable wall to convert into 2 separate areas	100 Maximum number combined 105 sqm
Heating	Underfloor heating
Lighting	Ceiling lights and natural light with blackouts
Ventilation	Windows open if required
Flooring	Carpet
Fire Exits	Either end of the corridor via internal or external stairs
Built in equipment	<ul style="list-style-type: none"> • Data projector • OHP • DVD player • Hearing loop • Computer • Projector screen • Video tape player • White board • Slide projector • Network points
Accessibility	All chairs are movable due to the flat floor in this area. Wheelchair seating can therefore be arranged in line with the organiser's requirements

Seminar Rooms 1A, 1B, 1C, 1D, 1E, 1F, 1G and 1H Facilities	
Flat floored seminar rooms	Please refer to 'Facilities at a glance' for maximum numbers
Heating	Underfloor heating
Lighting	Ceiling lights and natural light with blackouts
Ventilation	Windows open if required
Flooring	Carpet
Fire Exits	Either end of the corridor via internal stairs
Built in equipment	<ul style="list-style-type: none"> • White board • Projector screen • Network points • Hearing loop
Accessibility	All chairs are movable due to the flat floor in this area. Wheelchair seating can therefore be arranged in line with the organiser's requirements

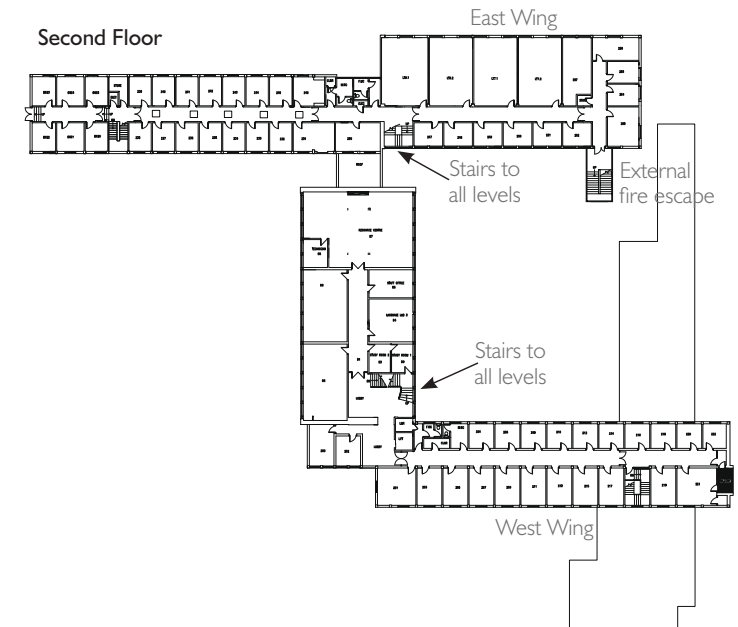


QUEEN'S BUILDING SECOND FLOOR

CAPABILITIES OF FACILITIES OF LECTURE THEATRES

Facilities at a glance					
	Theatre	Boardroom	Classroom	Cabaret	Horseshoe of chairs
Lecture Theatre 6 (Flat floored with dividing wall)	80	–	60	48	60
Lecture Theatre 6 divided – LT 6.1	40	24	30	28	24
Lecture Theatre 6 divided – LT 6.2	40	24	30	28	24
Lecture Theatre 7 (Flat floored with dividing wall)	80	–	60	48	60
Lecture Theatre 7 divided – LT 7.1	40	24	30	28	24
Lecture Theatre 7 divided – LT 7.2	40	24	30	28	24

VENUES with event exeter



QUEEN'S BUILDING SECOND FLOOR

CAPABILITIES OF FACILITIES OF LECTURE THEATRES

VENUES
with event exeter

Lecture Theatres 6 and 7 Facilities	
Flat floored lecture theatres with movable wall to convert into 2 separate areas	80 Maximum number combined
Heating	Underfloor heating
Lighting	Ceiling lights and natural light with blackouts
Ventilation	Windows open if required
Flooring	Carpet
Fire Exits	Either end of the corridor via internal or external stairs
Built in equipment	<ul style="list-style-type: none">• Data projector • Computer • White board • OHP• Projector screen • DVD player • Video tape player• Network points
Accessibility	Not wheelchair accessible. No lift to this floor.

